

## DO...

Do use only top quality finishes and follow manufacturer's instructions.

Do apply two coats of top quality unthinned acrylic latex exterior finish coating per paint manufacturer's application instructions.

Do use a brush to apply finishes.

Do use finishes that contain a water repellent.

Do backprime.

Do use finishes that contain mildewcides.

Do apply finish coats immediately after installation.

## DO NOT...

Do not apply exterior finishes by spraying.

Do not use "shake and shingle" type paints or stains.

Do not apply finish top coats after rain event.

## BECAUSE...

...low quality finishes will result in poor performance.

...acrylic provides the best protection from elements and moisture penetration as well as fluctuations in weather conditions, i.e. dry winds near a lake or ocean.

...other methods of application may not provide adequate coverage.

...water repellents help prevent excessive shrinking and swelling.

...it helps minimize bleeding and cupping.

...mildewcides inhibit the growth of unsightly mildew.

...primer coats are water resistant, not waterproof, and will not protect against extended exposure to moisture and humidity.

## BECAUSE...

...spraying may not provide adequate coverage or work the finish into the wood fibers as well as brushing does.

..."shake and shingle" finishes will have a very limited lifespan on redwood lumber siding.

...wood sidings must dry out and stabilize at a minimum of 72 hours before coat application.

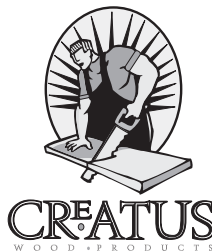
**Failure to follow proper installation and finish practices will negate product warranties.**

## CREATUS WOOD PREMIER® A Cal Fire Approved Product

Wood is a product of nature, so individual pieces vary in performance. Siding is a single component of a building. Its performance is dependent on many critical factors including: the structure's design, the craftsmen's skills, the use of other materials, the siding's exposure and the climate. The manufacturer and merchant have no control over these variables. Following this booklet's recommendations will help in achieving satisfactory performance under most conditions. For information on our warranty, please visit our website: <http://www.creatuswood.com>.



[www.creatuswood.com](http://www.creatuswood.com)  
[www.calredwood.org](http://www.calredwood.org)



# Read Me!

## CREATUS WOOD PREMIER® A Cal Fire Approved Product



CREATUS  
WOOD PRODUCTS

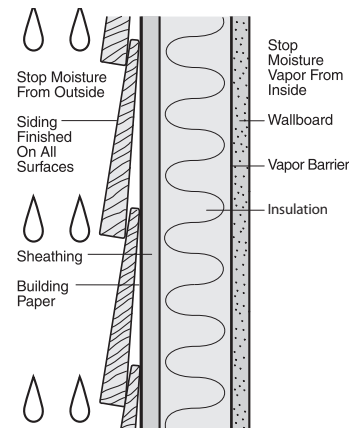
Avoid problems and callbacks! Handle & apply redwood siding as described in this booklet.

## HANDLE REDWOOD RIGHT

### STORE IT RIGHT

#### PREVENT MOISTURE PROBLEMS BEFORE THEY START

Most siding and trim "problems" and finish "problems" are caused by moisture. All woods shrink as they dry and swell when they absorb moisture. Problems such as checking, buckling, splitting and nail-popping are the result of this dimensional change. Redwood shrinks less



than other woods, so it is less likely to have moisture-related problems; as with any wood, some dimensional changes can be expected.

The good news is that most moisture-related problems are preventable through proper construction techniques. By anticipating some shrinkage and swelling, builders can reduce splitting and buckling. By limiting moisture's access to siding, builders can minimize the amount of shrinking and swelling that will take place.

Proper wall construction includes a vapor barrier, with a rating of 1 perm, on the warm side of the wall to prevent interior moisture access to the wall cavity. Water-resistant building paper with a rating of at least 5 perms should be applied over sheathing to prevent exterior moisture

from entering the wall. For sheathing, use plywood, waferboard or OSB.

Finish or primer should be applied to all faces, ends and edges of siding after it has reached a balance with the moisture in the air and before it is nailed in place. Factory priming or prefinishing is highly recommended.

#### STORE IT RIGHT (VERY IMPORTANT!)

Until wood siding is nailed in place, it needs protection from sun, moisture, dirt and any other elements which might discolor or disfigure the wood. If wood is exposed to excessive moisture, it will swell. If it is exposed to excessive sun or heat, it may shrink unevenly, causing cupping, checking or splitting. For best results, let redwood sidings reach an equilibrium with the moisture in the atmosphere by storing them for at least fifteen days at the job site in a well-ventilated shelter. This will significantly improve product performance.

#### DO

**Do store siding in a garage or shed** with adequate air circulation for best protection from the elements.

**Do keep siding dry.** If it can't be kept under a roof, protect it with a waterproof cover. Make sure the cover is secure, but loose enough to permit air circulation.

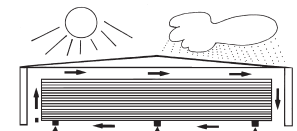
**Do store siding off ground and protected** from dirt, moisture, direct sunlight and extreme heat.

#### DO NOT

**Do not keep siding wrapped tightly in plastic covers.** Loosen wrappers at job site to permit air circulation.

**Do not leave siding in the sun or covered with dark plastic.** The dark cover will attract heat and cause excessive drying.

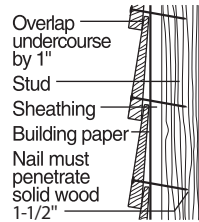
**Do not let siding get wet or dirty.** When storing lumber on the ground, place a plastic cover over soil to minimize moisture absorption from the earth.



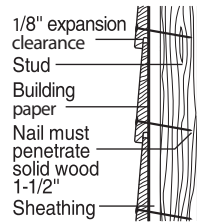
# RECOMMENDED NAILING METHODS

## HORIZONTAL SIDING (side view)

### PLAIN BEVEL



### RABBETED BEVEL



Face nail with one nail per bearing. Drive nail so shank clears the top of the preceding undercourse.

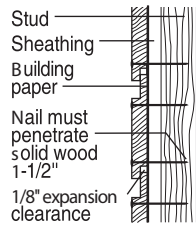
Face nail with one nail per bearing. Drive nail about one inch above lower edge of course.

**BEWARE OF DRIVING NAIL HOME WITH TOO HEAVY A FINAL BLOW. WOOD MAY SPLIT OR CUP DUE TO NON-SUPPORT IN CAVITY.**

**ALLOW 1/8-INCH EXPANSION GAP AT RABBET.**

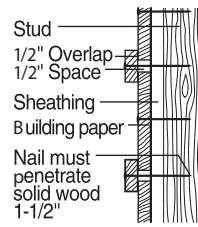
## VERTICAL SIDING (overhead view)

### CHANNEL SHIPLAP



Use one nail, an inch from the lap, for 6-inch channel shiplap. Face nail with two nails per bearing for patterns 8 inches and wider. Space nails 1/2 inches from the edge of the overlap and 2 inches from the edge of the underlap. Nail other widths proportionately. Position material to allow expansion clearance of 1/8 inch. Boards should be nailed to horizontal blocking installed between studs at no more than 24 inches on center.

### BOARD & BATTEN



Space underboards about 1/2 inch apart and nail with one nail per bearing driven through the center of material. Boards wider than 8 inches use two face nails evenly spaced. Nail batten strips with one nail per bearing, driven through the center. Boards should be nailed to horizontal blocking installed between studs at no more than 24 inches on center.

**Do not staple redwood lumber.** Most staples stain and do not have enough holding power.

**Do not nail through tip of undercourse** on lapped siding. This causes splitting.

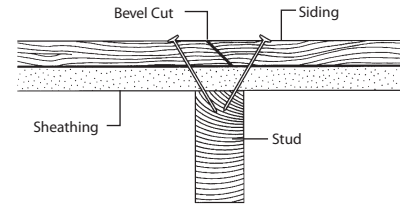
**Do not nail to sheathing only.** This will not hold lumber in place.

**Caution!** There have been reports of moisture-related problems with the use of rigid foam sheathing. Check with manufacturer regarding the application of wood siding over rigid foam sheathing.

### AVOID GAPS

Redwood exhibits very little end shrinkage. Unseasoned redwood from green to an over-dry state has a longitudinal shrinkage of about 0.1 to 0.2 percent. A twenty-foot board exhibiting 0.2 percent shrinkage would shrink a little less than 1/2 inch.

Using bevel cuts at butt joints can minimize the appearance of gaps if shrinkage occurs. Another method is to cut the last piece in each course 1/16 inch overlong, requiring it to be snapped into place for a tight fit. This practice allows for shrinkage but will not accommodate moisture-induced swelling.



### DO

**Do use noncorrosive nails** to avoid nail stains... aluminum alloy, stainless steel or top quality, hot-dipped galvanized.

**Do use ringed-shank wood siding nails.**

**Do use properly sized nails.** Shank should penetrate 1 1/2 inches into framing members or a combination of framing members and solid wood sheathing. If sheathing is not solid wood, use longer nails for 1 1/2 inch penetration into solid wood framing.

**Do pre-drill nail holes to prevent splitting** when nailing mitered corners or near board ends.

**Do use water-resistant building paper** with a rating of at least 5 perms.

**Do use a wood-based sheathing.**

**Do remember that saw-textured surfaces perform better and hold finishes longer.**

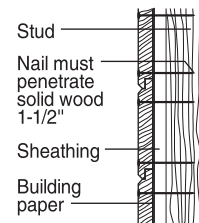
### DO NOT

**Do not use common steel, electroplated or poor quality galvanized nails.** These will cause stains.

**Do not use casing, finishing or other small-head nails,** except for blind nailing tongue and groove, because they will not hold lumber in place.

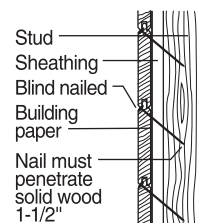
## HORIZONTAL OR VERTICAL SIDING (side view)

### V SHIPLAP



Face nail with two siding nails per bearing for patterns wider than 6 inches. Position nails one-quarter the width of the material in from each edge. For narrower courses, one nail per bearing is enough—with the nailing point one inch from the overlapping edge.

### TONGUE & GROOVE



Blind-nail 4- and 6-inch widths through the tongue. Use one nail per bearing. For wider patterns, face nail with two nails per bearing, as in V Shiplap, next page.



**CREATUS**  
WOOD PRODUCTS

**Dedicated to craftsmanship,  
quality and your  
complete satisfaction**



## FINISH IT RIGHT

### COMPLETE THE JOB RIGHT

- 1) Fill in nail holes with exterior grade wood filler, then spot prime.
- 2) Remove all soft and chalky paint, dirt, grease and all foreign materials.
- 3) Sand to smooth even finish as needed.
- 4) All exposed raw wood, including end cuts and splices **MUST BE SPOT PRIMED AND SEALED**
- 5) **DO APPLY FINISH COATS IMMEDIATELY AFTER INSTALLATION.**

### Paints

Paints provide the greatest degree of protection to wood sidings. The paint system should consist of two prime coats of a quality, waterbase primer and a minimum of two top coats of a quality acrylic latex exterior house paint. In addition, back priming and end sealing are required.

### Ocean, Lakes, Santa Anas & Extreme Weather Conditions

Additional paint needs to be applied on any structure located on or near the ocean, lakes, rivers or any water environments in order to adequately ensure moisture barrier against continuous high humidity.

Extreme climate conditions (i.e. located close to water and/or experiencing severe wind or freezing conditions) will require careful attention to the care of the wood as well as the paint application in addition to at least one additional coat of paint.

**Our Primed Finger Joint  
Redwood Sidings  
are coated with**

**Creatus Wood Premier®**

**our own specialty formulated  
fire retardant primer**

**Our Redwood Has  
Always Been Green®**